

WHO MAY ACCESS?

A financial grant for climate change adaptation projects

In an ever-warming world, ensuring a sustainable, climate-resilient future for communities will require commitment and significant investment. Climate change—in the form of intense rains, increasing temperatures and sea level rise, threatens the economic and social development of vulnerable communities, the costs of reducing the populations' exposure to climate risks and of protecting them from its impacts are increasing.

In response, the Philippine national government created the People's Survival Fund (PSF) through a law signed in 2012. The PSF recognizes that the adaptation needs and local capacities of each community are unique. The vulnerability of local communities to climate change varies greatly. Thus determining the cost of protecting one's community from the impacts of climate change is a challenge.

Community – driven adaptation projects

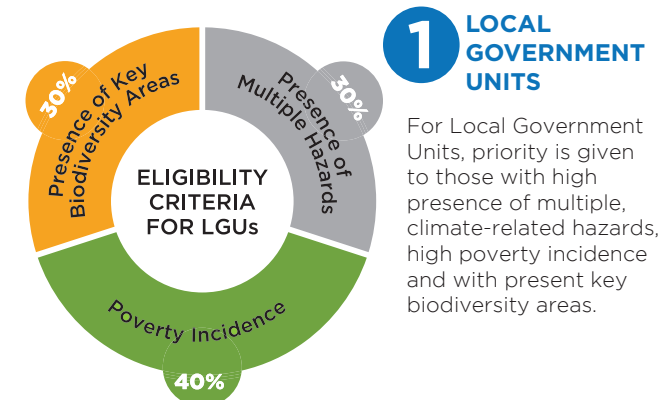
The PSF is an annual allocation intended for **Local Government Units (LGUs)** and **accredited Local/Community Organizations (LCOs)** to implement climate change **adaptation projects** that will better equip vulnerable communities to deal with the impacts of climate change. Projects should be aligned with the National Climate Change Action Plan (NCCAP) and the climate-proofed development plans, such as the enhanced climate change adaptation and disaster risk reduction Comprehensive Land Use Plans (CLUPs) or Local Climate Change Action Plans (LCCAPs), of the community.

1 BILLION
Initial balance sourced from government funds

Maybe be augmented through donations, grants and endowments

Adaptation projects are initiatives intended to improve the resiliency of the target locality/community, along with their natural and man-made resources, to overcome natural hazards of climate change and variability. These projects and/or programs must be sustainable over long periods of time to keep up with the evolving conditions brought by climate change.

Local government units and local/community organizations may access the Fund, provided that:



1 LOCAL GOVERNMENT UNITS

For Local Government Units, priority is given to those with high presence of multiple, climate-related hazards, high poverty incidence and with present key biodiversity areas.

2 LOCAL/ COMMUNITY ORGANIZATIONS

Before l/cos can access the Fund, they should conform with any of the following accreditation guidelines:

DILG Memorandum Circular 2013 - 70 <small>"Accreditation of Civil Society Organizations, and Selection of Representatives to the Local Special Bodies"</small>	DSWD-DBM-COA Joint Resolution 2014 - 01 <small>"Guidelines for Accreditation of Civil Society Organizations as Implementing Entities of Government or Public Funds"</small>	CCC Accreditation Guidelines for Local/Community Organizations <small>(see PSF website for guidelines)</small>
--	---	--

They must furnish the Climate Change Commission (CCC) a copy of their Certificate of Accreditation compliant with any of the aforesaid accreditation guidelines, along with the duly accomplished application form template.

In general, they must have the following:



TYPES OF CLIMATE CHANGE ADAPTATION PROJECTS



Adaptation activities in the areas of water resources and land management, agriculture and fisheries, health, infrastructure development, natural and coastal ecosystem



Improvement of monitoring, prevention, and control of vector borne diseases triggered by climate change



Forecasting and early warning system for climate change preparedness



Strengthening or establishment of regional centers and information networks supporting climate change projects



Risk transfer insurance needs for agriculture and other stakeholders



Community adaptation support programs by local organizations

WHAT DO WE SUBMIT UPON OUR APPLICATION?

1

LOCAL GOVERNMENT UNITS

- ☐ Letter of Intent
- ☐ Accomplished Project Proposal Template
- ☐ Adaptation references, which may include any of the following:
 - a. Climate Risk and Vulnerability assessments
 - b. CCA-DRR-enhanced Comprehensive Land Use/Development plans (CDPs)
 - c. Local Climate Change Action Plan
- ☐ Annual Investment Plan (AIP)

LOCAL/ COMMUNITY ORGANIZATIONS

2

- ☐ Letter of Intent
- ☐ Accomplished Project Proposal Template
- ☐ Adaptation references, which may include any of the following:
 - a. Risk and Vulnerability assessments
 - b. CCA-DRR-enhanced Comprehensive Land Use/Development plans (CDPs)
 - c. Local Climate Change Action Plan
- ☐ Organizational/Board Resolution affirming interest to access the Fund
- ☐ Proof of Communication with the LGU covering their proposed beneficiaries

Other documentary requirements will be required after passing the initial screening process.

WHAT IS THE APPLICATION PROCESS?

1



Call for Proposals

(PSF Board/ PSF Secretariat)

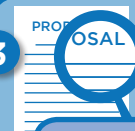
2



Submission of Proposals

(Proponent LGUs/ L/COs)

3



Review and Evaluation

(PSF Secretariat/ DBP/
Interagency technical group/ CCC)

(Pre-assessment/
Initial Screening)

(Field Appraisal)

4



Concurrence and Endorsement

(CCC Commissioners)

5



Project Final Approval

(PSF Board)

Acceptance Period:

Cycle 1: April to May | **Cycle 2:** October to November

HOW TO REACH PSF?

Email Addresses:
psf@climate.gov.ph
psf.ccc@gmail.com

Website:
www.psf.climate.gov.ph

Landline Numbers:
(02) 925-8954

Address Applications or Inquiries to:
Head of the PSF Secretariat
Department of Finance
5/F DOF Building Roxas Blvd., Cor.
Pablo Ocampo Street, Manila 1004

